



# UNDERCARRIAGE PARTS

## PRODUCT CATALOG

The Leading Global Undercarriage  
Parts Supplier For  
Mini/Compact Excavators

# CONTENT

<b>COMPANY PROFILE</b>	<b>02</b>
<b>TRADE CAPACITY</b>	<b>03</b>
<b>ADAVANTAGE</b>	<b>04</b>
<b>BOTTOM ROLLER</b>	<b>05-06</b>
<b>TOP ROLLER</b>	<b>07-08</b>
<b>SPROCKET</b>	<b>09-10</b>
<b>IDLER</b>	<b>11-12</b>
<b>TRACK CHAIN &amp; TRACK ASSY</b>	<b>13-15</b>
<b>RUBBER TRACK</b>	<b>16-17</b>
<b>OTHER ACCESSORIES</b>	<b>18</b>
<b>APPLICABLE BRAND &amp; MODEL CHART</b>	<b>19-21</b>
<b>SERVICE COVERAGE</b>	<b>22</b>



## COMPANY PROFILE

Fulian Machinery Co.,Ltd specialised in produce and wholesale crawler undercarriage track parts including for mini and compact excavators from 0.8-8T, our parts cover from sprocket, idler, carrier roller, track roller, track shoe, track chain, track assembly to chain guard, track adjuster, recoil tension spring, bucket teeth and bucket pin etc.





## Trade Capacity

FL parts, with competitive quality, stable output and considerable after-sales service, serve for most popular manufacturers, and has its long-term partner ship with great undercarriage parts dealer in the global market for a decades





Product Designing



Fine Machining



Dimension Testing



Assembling



Oiling



Polishing



Spraying/QC



Finished Product

## Advantages

- Standard procedure management, verified by TUV
- Follow OEM quality, Maximized wear life
- Have the most vast range of parts for mini and Compact Excavators

## STRUCTURE



### REINFORCED FLANGES

Heat treatment process prolong the wear life (HRC 56-62)



### DUO-CONE SEAL GROUPS

Quality seal with heat-resistant and anti-cold for 0 oil leakage



### WELDED BY SUBMERGED ARC (SAW)

Better mechanical property compared to manual arc welding



### FORGED ALLOY STEEL

50MnB hardened steel with better performance in resistant to corrosion and crack



## BOTTOM ROLLER

### TYPICAL MODELS



**YB201**  
YANMAR



**KX41**  
KUBOTA

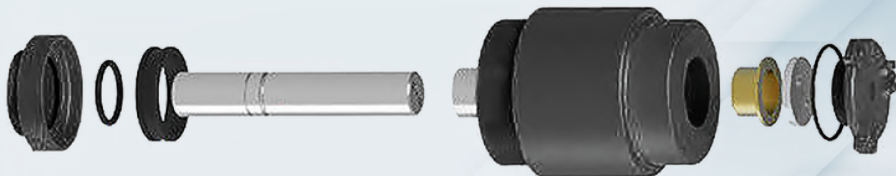


**TB68**  
TAKEUCHI



**JCB802**  
JCB

## STRUCTURE



### REINFORCED FLANGES

Heat treatment process prolong the wear life (HRC 56-62)



### WELDED BY SUBMERGED ARC (SAW)

Better mechanical property compared to manual arc welding



### DUO-CONE SEAL GROUPS

Quality seal with heat-resistant and anti-cold for 0 oil leakage



### FORGED ALLOY STEEL

50MnB hardened steel with better performance in resistant to corrosion and crack





## TOP ROLLER

### TYPICAL MODELS



**JCB802**

JCB



**KH90**

KUBOTA



**TB145**

TAKEUCHI



**PC20-7**

KOMATSU

## STRUCTURE



### REINFORCED TOOTH PROFILE

Quenching treatment maximize the wear life of the tooth (HRC 56-62)



### CASTED ALLOY STEEL

50MnB hardened steel with better performance in resistant to corrosion and crack



### PERFECT FITMEN

Follow genuine standard strictly to gurantee the fitment



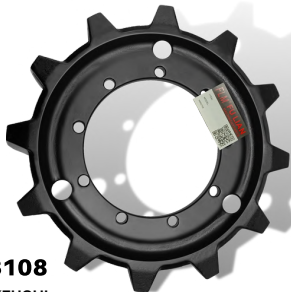
### 24 MONTH WARRANTY

Reassuring after-sales service



## SPROCKET

### TYPICAL MODELS



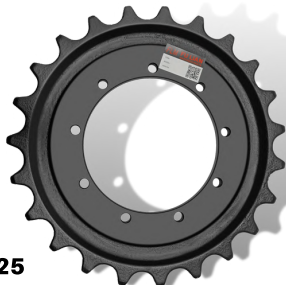
**TB108**  
TAKEUCHI



**KH60**  
KUBOTA

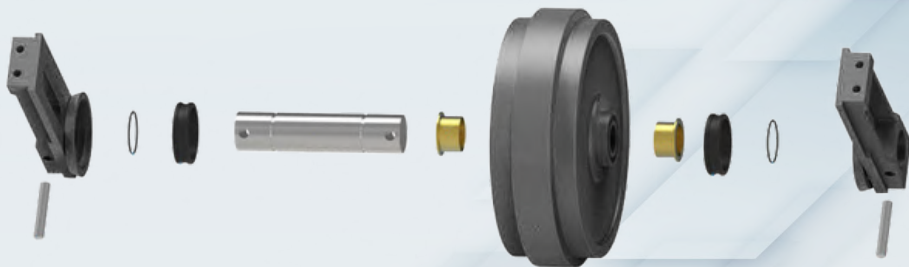


**IHI55**  
IHISCE



**SK25**  
KOBELCO

## STRUCTURE



### WELDED BY SUBMERGED ARC (SAW)

Better mechanical property compared to manual arc welding



### PRECISION MACHINED

Optimum internal design and precision machined surface guarantee consistent lubrication



### REINFORCED SURFACE

Heat treatment process prolong the wear life (HRC 56-62)



### DUO-CONE SEAL GROUPS

Quality seal groups with heat-resistant and anti-cold for 0 oil leakage



## IDLER

### TYPICAL MODELS



**KX121-3**

KUBOTA



**X418**

BOBCAT



**TC16**

Terex

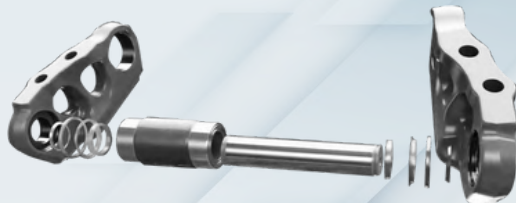
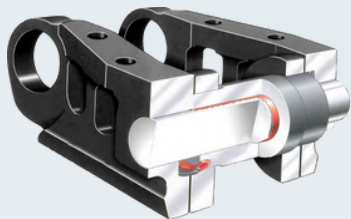


**CAT303.5**

CATERPILLAR



## STRUCTURE



### TOP-QUALITY RAW STEEL

Surface hardness of track chain assembly is HRC50-60 for reduced wear and longer life



### FLEXIBLE OEM OPTIONS

Carry the load of the wheels and sprocket as well as extending the wear life



### 24 MONTHS WARRANTY

Strength the flexibility and protect from crack



### HUGE STOCK AND TREAD PATTERN

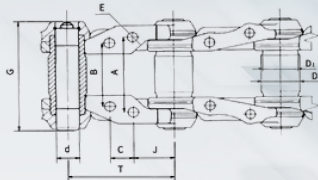
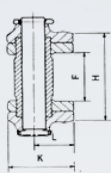
Covers most sizes and popular patterns



# TRACK CHAIN & TRACK ASSY

Parameters for Mini Excavator Track Link Assembly (0.8-10T)

Sequence	FL P/N	T	A	B	C	D	D <sub>1</sub>	d	E	F	G	H	J	K	L	Symbol Applicable Model
1	FLM90SE	90	/	/	/	22.2	22.2	14.2	/	27	80	59	/	46	23	SK015
2	FLM101SE1	101.6	55	55	22	32.16	32.16	19.16	10.5	35	93	76	39.8	63	37	EX22 EX25 EX30 EX35 PC20 PC30 PC35R
3	FLM101SE2	101.6	64	64	22	32.16	32.16	19.16	10.5	44	102	85	39.8	63	37	IHI30J
4	FLM101SE3	101.6	65	65	22	32.16	32.16	19.16	10.5	45	103	86	39.8	63	37	SK025 SK030 SK032 SK035
5	FLM101SE4	101.6	52	52	22	32.16	32.16	19.16	10.5	32	90	73	39.8	65	37	PC20
6	FLM101SE5	1101.6	55	55	22	33	33	21	12.5	35	97	77	39.8	70	40	YC35
7	FLM101SE6	101.6	55	55	22	32.16	32.16	19.16	10.5	34	95	72	39.8	61	31.5	TM20
8	FLM135SE1	135	99	72	43.2	41.18	41.18	23.98	12.5	45	141	105	42.5	75	40	PC60-3/5 DBC8060
9	FLM135SE2	135	99	72	43.2	41.18	41.18	23.98	12.5	48	141	108	42.5	75	40	JV65-7 YC60 SWE
10	FLM135SE3	135	99	72	43.2	41.18	41.18	23.98	12.5	46	138	106	42.5	75	40	SWE70
11	FLM135SE4	135	110	83	45	41.18	41.18	23.98	14.5	56	151	116	42.5	75	40	HD250
12	FLM135SE5	135	98.4	74.4	46	35.24	35.34	22.68	12.5	47.4	133	101.4	41	65.5	35	KY60
13	FLM135SE6	135	88	64	46	35.24	35.24	22.68	12.5	37.2	122	78.2	41	65.5	35	SWE50
14	FLM135SE7	135	93.8	63.8	46	35.24	35.24	22.68	12.5	40.4	122	87.4	41	65	35	PC40-7,SK45
15	FLM135SE8	135	104	80	46	35.24	35.24	22.68	12.5	52	139	105	41	65	35	EX40 EX45
16	FLM135SE9	135	88	58	46	35.24	35.24	22.68	12.5	34.6	116	81.6	41	65	35	KY50

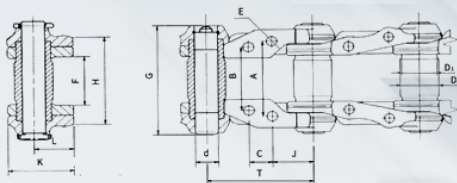


Bolt-on and Clip-on rubber pads are available

# TRACK CHAIN & TRACK ASSY

Parameters for Mini Excavator Track Link Assembly (0.8-10T)

Sequence	FL P/N	T	A	B	C	D	D <sub>1</sub>	d	E	F	G	H	J	K	L	Symbol Applicable Model
17	FLM135SE10	135	85	55	46	35.24	35.24	22.68	12.5	31.6	113	78.6	41	65	35	PC40-5/6
18	FLM140SE1	140	86	86	52	37	37	25	12.5	57.6	140	112.4	44	70	38	RH2.5 FL4 PC75R2 DBC8085 KY70
19	FLM140SE2	140	86	86	52	42.2	42.2	28.2	14.5	51	138	116	45.5	78	42	
20	FLM140SE3	140	94	94	52	41.98	41.98	26.98	12.5	63	146	123	44	77	41	Use for Spiral Drilling Machine
21	FLM149SE1	149	84.2	84.2	57	38	38	25	12.5	52.4	126	114	46	77	41.8	CW341 CW351 ECM350 ECM450
22	FLM154SE1	154	89	73	57	41.42	41.42	24.21	14.5	45	128	104	44	74	40.5	,PC60-6 PC75 SK60
23	FLM154SE2	154	112.4	82.4	57	46.55	46.55	30.25	14.5	49.4	161	124.4	44	87	47	PC100-1/2 PC100-3 HD350
24	FLM154SE3	154	90	90	55	46.55	46.55	30.25	14.5	56	157	127	49	80	42	EX60-1/2/3/5
25	FLM160SE1	160	99	99	56	44.98	44.98	30.08	14.5	64	161	135	52	83	46	FL6
26	FLM171SE1	171.45	144.5	125.4	58.7	53.95	53.95	36.61	16.5	87.7	209	171.7	56.3	101.6	58.8	R200 K907
27	FLM171SE2	171.45	108	108	60.3	50.66	50.66	33.75	16.5	68	179	144.8	55.57	95	51	EX100/120 R900/02/04/05 CAT110 CAT120
28	FLM171SE3	171.45	108	108	60.3	50.66	50.66	33.75	14.5	68	179	144.8	55.57	95	51	L HD400 R901 R911 R912 R921 R922 R925
29	FLM171SE4	171.45	108	108	60.3	47.26	47.26	30.25	16.5	58.6	167	129	55.57	90.2	49.5	EX130 SK120 SK100
30	FLM171SE5	171.45	108	108	60.3	53.82	53.82	33.75	16.5	68	179	144.8	55.57	95	51	EX100
31	FLM171SE6	171.45	130	110.9	58.7	53.82	53.82	35	16.5	73	193	157	54.7	101.6	58.8	ZY150



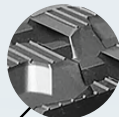
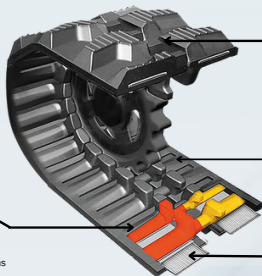
Bolt-on and Clip-on rubber pads are available

## STRUCTURE



### 3S IRON CORE

- Unique, interlocking metal insert design
- Reduces vibrations on machine & operator
- Lowers risk of de-tracking on cross-gradients
- Patented



### HAUGER LUG

- Stepped tread lugs shed mud
- Optimum grip
- Patented



### CURBSHIELD

- Edge cut protection
- Extends service life



### STEEL CORE WIRES

- Pre-tensioned cables for ultimate strength
- Both individual wires and cables coated to resist rust, even if the track is cut
- Even cable alignment eliminates weak spots



## TOP-QUALITY RAW STEEL

Surface hardness of track chain assembly is HRC50-60 for reduced wear and longer life



## FLEXIBLE OEM OPTIONS

Carry the load of the wheels and sprocket as well as extending the wear life



## 24 MONTHS WARRANTY

Strength the flexibility and protect from crack



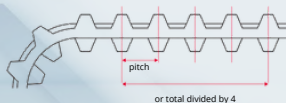
## HUGE STOCK AND TREAD PATTERN

Covers most sizes and popular patterns

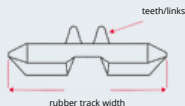


# RUBBER TRACK

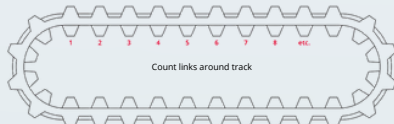
WIDTH



PITCH



LINKS



## MINI EXCAVATOR RUBBER TRACK PARAMETERS

No.	WIDTH (MM)	PITCH(MM)	NO. OF LINKS	No.	WIDTH (MM)	PITCH(MM)	NO. OF LINKS	No.	WIDTH (MM)	PITCH(MM)	NO. OF LINKS
1	150	72	30-37	25	300	52.5WK	70-86	49	400	72.5N	68-82
2	180	60	30-48	26	300	52.5R	70-86	50	400	72.5W	68-82
3	180	72	31-42	27	300	53	70-86	51	Y400	72.5	68-82
4	180	72B	31-42	28	300	55	70-86	52	400	72.5R	68-82
5	180	72R	31-42	29	300	55.5	72-84	53	K400	72.5	68-82
6	180	72K	31-42	30	K300	109	34-46	54	400	75.5	74-82
7	190	72	33-47	31	300	109N	34-46	55	400	107	35-47
8	200	72	33-47	32	300	109W	34-46	56	400	142	35-40
9	200	72R	22-47	33	320	52.5	70-92	57	K400	142	35-40
10	230	48	60-82	34	320	54	70-92	58	400	144	35-40
11	230	72	31-64	35	320	84	48-63	59	420	84	60-78
12	230	96	30-41	36	320	86	48-63	60	420	100	48-66
13	230	101	30-42	37	320	90	47-63	61	450	71	70-79
14	250	47	43-60	38	320	100	37-62	62	450	76	78-94
15	250	48.5Y	43-60	39	320	100NM	41-54	63	450	81N	68-82
16	250	52.5	43-60	40	320	106	37-46	64	450	81W	68-82
17	250	72	43-60	41	350	52.5	78-106	65	K450	83.5	70-80
18	260	96	36-44	42	350	54.5	78-106	66	450	83.5Y	50-74
19	260	109	35-46	43	350	56	70-86	67	450	84	50-74
20	280	72	56-67	44	350	56R	70-84	68	450	86	50-74
21	280	106	35-40	45	350	90	41-50	69	450	90	50-74
22	300	52.5K	68-92	46	350	75.5	72-82	70	450	100	46-55
23	300	52.5N	68-98	47	350	109	40-50	71	450	163	35-40
24	300	52.5W	68-92	48	Y 370	107	36-46				

**Disclaimer :** This chart is for reference only for 100% accurate specifications please refer to your machine's manual or contact the manufacturer for verification.





## MADE BY CNC PRODUCING LINE

manufactured by CNC lathe to ensure high quality and accurate size



## SURFACE TREATED

surface treated with anti-rust complete specifications adequate supply



## QUALITY AND LIFETIME

45# or 40Cr steel ensure quality and long lifetime



# OUR MINI EXCAVATOR PARTS SERVE FOR



**VOLVO**  
Construction Equipment

**IHI**



**HITACHI**



**MITSUBISHI**  
HEAVY INDUSTRIES

**KOMATSU**



**Kubota**

**KOBELCO**

**TAKEUCHI**

# MODEL CHART

## FULIAN UNDERCARRIAGE APPLICABLE MODEL LIST.

NO.	Brand	Model No.								
1	AIRMAN	Airman AX1900-1 AX40	HM25 AX1900-8 AX45	HM30 AX20U	HM30S AX22	HM30S2 AX18	HM35 AX25	HM45 AX30	AX12 AX35	AX15 AX35S
2	BOB-CAT	316 334 E32 X435	320 335 E35 X442	320L 418 E42 E63	322 425 E45 E85	323 430 E50	325 E10 E55	328 E20 337	329 E25 337 Long Arm	331 Long Arm E26 341
3	CASE	CX18B Series 2 CX30C CX40BZTS	CX20B CX31 CX35B	CX20B ZTS CX31B CX57C	CX22B CX31B ZTS CX60C	CX22BZTS CX33C	CX25 CX36	CX26C CX36B	CX27B CX36B ZTS	CX27B ZTS CX37C CX40B
4	DAEWOO AND DOOSAN	DH028 DX35Z	DH50 DX55	SL55	SOLAR55	SOLAR 55V	SOLAR 55V PLUS	SOLAR 70-III	DH55	DX30Z
5	HITACHI	EX27U EX33U EX40UR EX60-1 ZX27U CG45	EX29UE EX33MU EX40UR-2 EX60-2 ZX30 CG45-3	EX30 EX35 EX40UR-2C EX60-3 CG45C	EX30-2 EX35-1 EX45 EX60-5 ZX35U CG45B	EX30U EX35-2 EX45-2 EX60LC-2 ZX40 CG65	EX30UR-2 EX35U EX50 EX60LC-3 ZX40U CG65C	EX30UR-2C EX40 EX50U EX60LC-5 ZX50	EX30UR-3 EX40-2 EX55UR EX60UR-2 ZX50-3	EX32U EX40U EX60LC UE30 ZX50U
6	HANIX	H24 S&B 30	H27 S&B 480	H30 S&B 550	H35	H45	S&B 20	S&B330	S&B 22	S&B 25
7	HYUNDAI	R16-7 R40	R22-7 R50	R25Z-9AK R55-7	R28-7 R75-7	R35-7 R80-7	R35Z-7	R35Z-9	R35Z-9A	R36B-7
8	IHI SCE	25J 30UJ 35HX-2 45N 55N IS27G IS40G	25HX 30Z 35N 45HX 55HX IS28G IS50G	25HX 30HX-2 40J 45HX-2 55UJ IS28LX IS55LX	25HX-2 30VX 40JX 50HX 55VX IS28UX IS55UX	28J 32J 40HX 50VX 65HX IS30F CCM50T	28N 35GX 40HX-2 50Z 65UJ IS30G	30J 35J 45J 55G IS25G IS35-2	30JX 35JX 45J-2 55J IS25F IS35F-2	30HX 35HX 45UJ 55J-2 IS27F IS35G
9	JCB	802 802S2TS 806S2TS	802.4 803ZTS 8060	802.5 803Z2 J570	802.7 8035 JZ70	802.7Z 8040ZTS	803 8045ZTS	803E 8050	803PLUS 8052	804 SUPER PLUS 8060
10	JOHN DEERE	JD15 JD30 JD50C ZTS JD80C	JD17D JD30G JD50G JD85D	JD17G JD35 ZTS JD60G JD85G	JD17ZTS JD35C ZTS JD70	JD25 JD35D JD70D	JD26G JD35G JD75C	JD27 ZTS JD50 JD75D	JD27C ZTS JD50G JD75G	JD27D JD50 ZTS JD80
11	KATO	HD50UR	HD205	HD250	HD307	HD307	HD308			

## FULIAN UNDERCARRIAGE APPLICABLE MODEL LIST.

NO.	Brand	Model No.								
12	KOMATSU	PC05 PC27R-8 PC30MR-2 PC38U-2 PC45MR-1	PC07-2 PC27MR-2 PC30MR-3 PC40MR-1 PC45MR-3	PC10-7 PC27MR-3 PC30MRX-1 PC40MR-2 PC50U-2	PC20MR-1 PC27MRX-1 PC30-7 PC40MR-3 PC50MR-2	PC20MRX-1 PC28 PC30R-8 PC40R-8 PC58U-3	PC20MR-2 PC28U-2 PC30R-8 PC40-6 PC60-3	PC20R-8 PC30-3 PC38R-8 PC40-7 PC60-5	PC20-5 PC30-6 PC35MR-2 PC45-1 PC60-7	PC25-1 PC30MR-1 PC35MRX-1 PC45R-5 PC60U-5
13	KOBELCO	SK025 SK030-2 SK355R-3 SK60"III	SK025-2 SK305R SK405R SK60-IV	SK25 SK305R-2 SK405R-2 SK60-V	SK255R SK305R-3 SK455R SK60-3	SK027 SK032 SK455R-2 SK60-4	SK030 SK035 SK500R-2 SK60-5	SK030UR SK035-2 SK500R-3 SK60UR	SK300R-2 SK355R SK505R-3	SK300R-3 SK355R-2 SK60
14	KUBOTA	KH28L KH90 KH151 KH045 K022 U25-3	KH51 KH91-2 KH161-2 KH012 K022 U30	KK61 KH90 KH161-3 KH024 K028 U35	KK61-2 KH90 KH191 KH026 K030 U35-3	KK61-3 KH90 KH025 KH027 K033 U45	KH66 KH91-2 KH026 KH027 KH033 K040 U45-3	KK71 KH90 KH027 KH040 K045 U50-3	KK71-2 KH91-2 KH030 K013 K045 RX502	KK71-3 KH151 KH033 K015 U20-3
15	NISSAN	N203-2 N450-2	N260-2	N3	N300	N350	N250	N20	N2155	N45
16	PEL-JOB	EB12.4 EB300	EB14.4 EB306	EB25.4 EB350	EB30.4 EB406	EB150KR EB450	EB150KT EB450KT	EB150KTV	EB200KT	EB250
17	SUMITOMO	S30FXS S90-1 LS1000EJ SH30JX SH60 SH75URG	S50F S90EJ-1 LS1200EJ3 SH32J SH60B2 SH75X-3	S60F3 S90EJ-2 LS1200J SH35J SH65 SH75X-2	S70F2 S90FX3 LS1400J SH35U SH64U SH75X-2	SH25J LS900EJ LS1400EJ SH40 SH64UR SH75X-2	SH20JX LS900F S1400AJ SH45J SH65U SH75X-2	LS80FJ2 S90 S120F SH50 SH65UR SH75	S80F2 S90FJ S120F1 SH55 SH75	S80FX3 S100F2 SH30J SH55UR S160F2U
18	TEREX	HR1.6 TC35E	HR2.0 TC37	HR3.7	HR14	HR16	TC16	TC20	TC29	TC35
19	VOLVO	EC13BKR EC25 ECR48C	EC14 EC27C EC50	EC15 ECR28 EC55B	EC15XT EC30 ECR58	EC15XTV EC35 EC55C	EC20 EC35C EC70	EC20XT ECR38 ECR88	EC20XTV EC45 ECR88PLUS	EC208XT EC45 PRO
20	YANMAR	B3 B6-3 B17 B30V V1030-1 V1075A C50R	B3-2 B7-5A B17-2 B37 V1030-2 V1075B YB121	B05 B08 B17-3 B37V V1030V V1030V YB151	B5 B08-3 B19 B50 V1040-2 SV08-1 YB201	B5-1 B12 B22 B50V V1045 SV08-3 YB271	B5-2 B12-3 B22-2 V1010 V1050-2 C30R YB301	B6 B14 B27 V1015 V1070 C30R-1 YB351	B6-1 B15 B27 V1020 V1075 C30R-2 YB351-2	B6-2 B15-3 B27-2 V1020 V1075 C30R-2

# THE UC PARTS SPECIALIST

What can you get from Fulian?

- Your powerful overseas warehouse  
Fulian has sufficient inventory to ensure customers' immediate delivery request.
- Your professional technical consultancy  
Have authorized technician with Over 25-year experience in UC parts, can solve most of the technical problems encountered at present.
- Your trusted and reliable long-term partner  
Strictly control product quality, absorb customer feedback and suggestions, establish sustainable development with customers, and help to solve after-sales problems





**No.1009 Houkeng Industrial Licheng  
District, Quanzhou, China**

**+86 137-9957-5737**

---

The Leading Global Undercarriage Parts Supplier For  
All Earth Moving Machines.



[www.fl-part.com](http://www.fl-part.com)  
 [service@fl-part.com](mailto:service@fl-part.com)